



[www.TidewaterEmmaus.org](http://www.TidewaterEmmaus.org)



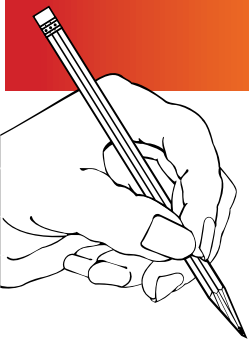
# Tidewater

EMMAUS / CHRYSALIS

Tidewater Emmaus • P. O. Box 61485 • Virginia Beach, VA 23466-1485

This newsletter just has a few updates this time and a lot of Well Wishes for the New Year. Once the New TWE Board meets in January we will get back to the normal newsletter full of comments from the board and updates of the Chrysalis Flight. *Happy New Year Everyone.*

## WELCOME



*A note from the  
Community Lay Director,  
Marybeth Grambo*

*But as for me, I trust in You, O Lord;  
I say, "You are my God" My times  
are in Your hand Psalm 31:14-15*

To the precious Community of Tidewater Emmaus:

I want to thank you, for welcoming me as the newest Community Lay Director.

I walked on TW75, sat at the table of Rebecca's Reward and serve at Sandbridge Community Chapel, UMC.

I have had many brothers and sisters walk this CLD path before me and already rely heavily on these "cloud of witnesses". Our focus will continue in fervor to be all about Jesus; all about a Life in Grace that we chose when we said "yes Lord, yes Lord, Yes, Yes Lord!".

The Board will remain focused on being good stewards of your time and gifts, and will honor our Lord in our service to you all.

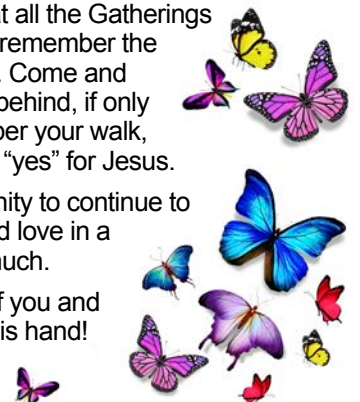
I look forward to seeing you at the January Chrysalis Candlelight for both boys and girls. I am in prayer for caterpillars to fill the boy's flight and urge you to pray with me.

Come and join us this year at all the Gatherings as we worship our King and remember the fire we felt on our weekends. Come and leave the noise of the world behind, if only for a few hours, and remember your walk, your closing statement, your "yes" for Jesus.

Please pray for this Community to continue to be a shining light of hope and love in a world that needs it so very much.

I remain in prayer for each of you and for God to hold this time in His hand!

DeColores!  
Marybeth





[www.tidewaterchrysalis.org](http://www.tidewaterchrysalis.org)

*...transformed into his likeness with everlasting glory... II Cor 3:18*

Sponsors, please closely read the information letter that you received - we have added many more useful items to help them prepare for a successful weekend

We would also like to stress the 'no tolerance for electronics' policy - for caterpillars and for adults in attendance at candle light and closing.



### CHRYSALIS FLIGHT JANUARY 14-16, 2017

Transforming youth lives from growing Chrysalis to beautiful butterflies. Join us on our faith flight on flights TWC 60(girls) and 61(boys).

## NO Cell Phones, No Videos

The walk to Emmaus is an experience of Christian spiritual renewal and formation that begins with a three-day short course in Christianity. It is an opportunity to meet Jesus Christ in a new way as God's grace and love is revealed to you through other believers.

The objective of Emmaus is to inspire, challenge, and equip the local church members for Christian action in their homes, churches, communities and places of work.

That is why we stress No Electronics for Pilgrims, Caterpillars, and even Teamers on the weekends.

We as a Community need to give this time to God and leave all the distractions that keep us from this experience at home. There are only a few key teamers that maintain their devices but strictly for communications with CST and Emergencies only.

This is also why we do not allow Camera or Videos during Candlelight. Its a persons personal walk with God and is between them and God. Thank You.

## PRAYER REQUEST

WE ARE HERE TO PRAY FOR YOU

[tweprayers@gmail.com](mailto:tweprayers@gmail.com)

We coordinate all your prayer needs in a timely manner.



## SPRING WALKS

TW113 Men's Walk, April 20-23, 2017 at Hope Haven

TW114 Women's Walk, May 4-7, 2017 at Hope Haven

## SPONSORSHIP

Currently TW-113 and TW-114 are half way to our minimum. This is a very good start to the next walks.

Sponsors still have time to get their Early Rooster Discount. Both applications (pilgrim and sponsor) must be postmarked by February 15, 2017, plus include payment in order to qualify for discount!!!

## TEAM SELECTION

If you have not gotten your application in to team or CST better hurry. Team Selection will be meeting soon. Men and women teamers are needed. Remember, applications must include payment to be considered or arrangements must be made with finance. Applications are available on the website at [www.tidewateremmaus.org](http://www.tidewateremmaus.org).

## GATHERINGS

Candlelight will be held at Triple R. Ranch for Chrysalis Flights TWC60 & TWC61.

**Chrysalis Candlelight starts at 7pm on January 15th**

Triple R Ranch is located at 3531 Bunch Walnuts Rd, Chesapeake, VA 23322. Visit their website for directions: [www.triplerranch.org](http://www.triplerranch.org)

**Remember - No Cameras, No Videos.**

Next Emmaus/Chrysalis Gathering is February 18, 2017 at Community UMC, 1072 Old Kempsville Rd., Virginia Beach, VA 23464. 5:30 - 6:30pm Fellowship Potluck, 6:30 - 8:15pm Music and Prayer. Come see the new Butterflies from Flights TWC60 and TWC61.

## COMMUNICATIONS

If you change your email address please forward any changes to [TWEcommunication@yahoo.com](mailto:TWEcommunication@yahoo.com). We get emails rejected monthly and have no way of knowing how to get your newsletters to you. We also try to maintain a mailing list too so any address changes would be appreciated. This information is strictly for Emmaus use only and is not shared. Thank you.

## 4th Day Speakers Needed

If you are interested in giving your 4th day talk during one of our monthly gatherings, please contact [twegatherings@yahoo.com](mailto:twegatherings@yahoo.com). Your Emmaus Community would love to hear how your 4th day is going.